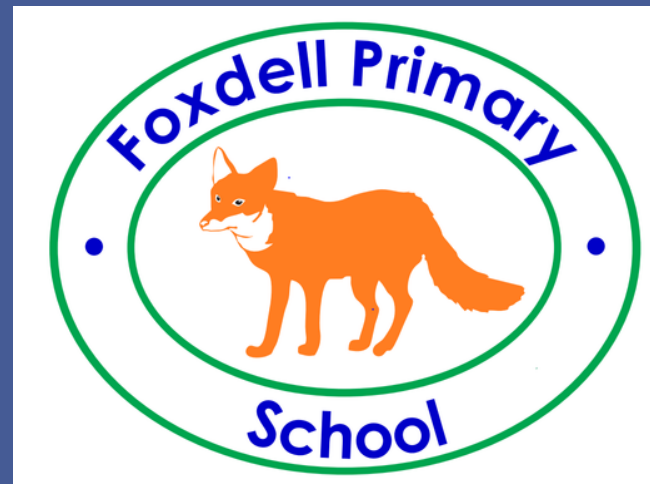


KS2 SATs Parent Meeting



Today's Agenda

What are SATs?

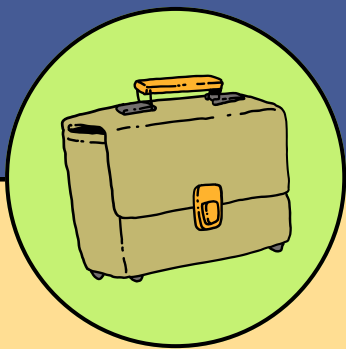
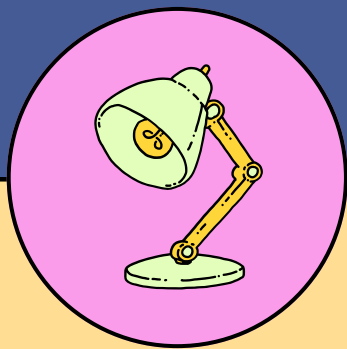
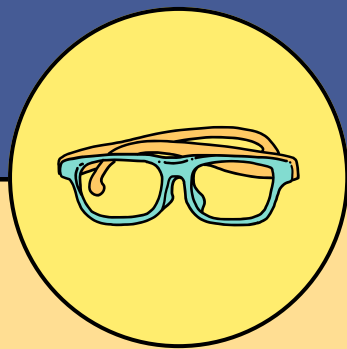
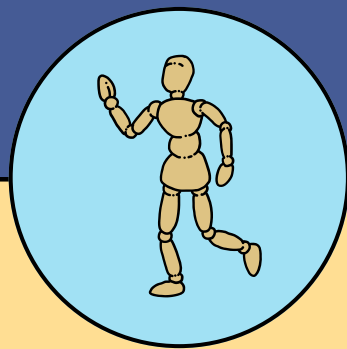
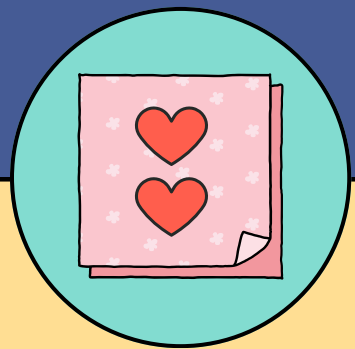
When are SATs?

How can we prepare?

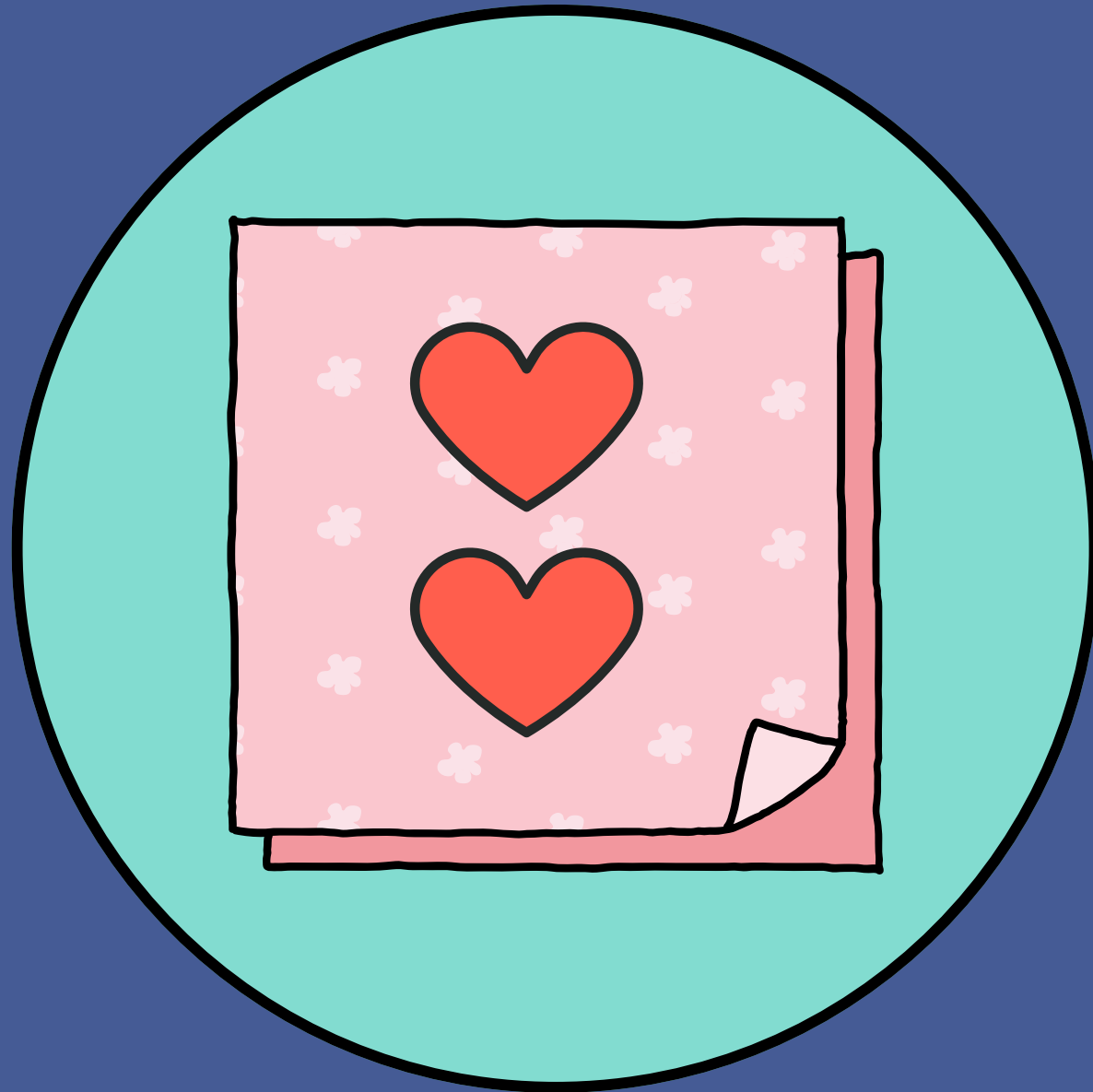
Access Arrangements

Results and Grading

Writing in Year 6



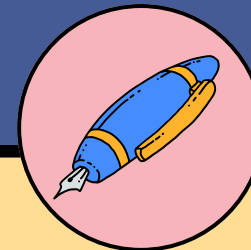
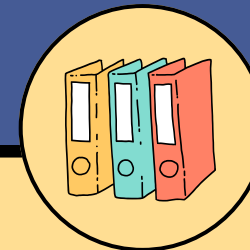
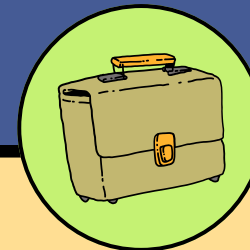
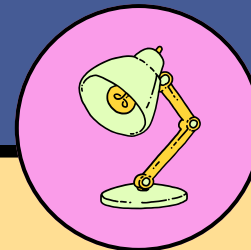
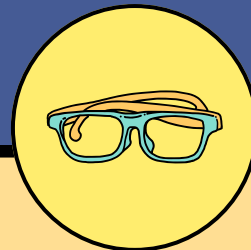
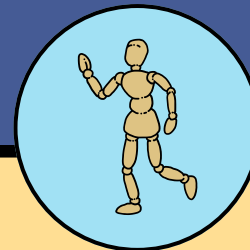
What are SATs?



If you have a child in year 6, at the end of key stage 2 (KS2) they will take national curriculum assessments in:

- English grammar, punctuation and spelling
- English reading
- mathematics

Some people refer to these tests as SATs.



The tests help measure the attainment of pupils in relation to the standards set out in the national curriculum, and help teachers and parents identify where pupils may need additional support in a certain subject area. The test results are also used to report publicly on schools' performance via the Department for Education's (DfE) [Compare School and College Performance](#)¹ service and to produce national and regional performance statistics.

Grammar Test

The Grammar, Punctuation and Spelling Test:

- There is a specific focus on knowing and applying grammatical terminology with the full range of punctuation tested.
- Technical terms in grammar will be tested.
- There will be one test paper for grammar, punctuation and vocabulary and one test paper for spelling.
- The grammar test will last for one hour and there will be a total of 50 marks available.
- In the spelling test has twenty unknown words based around the curriculum words and spelling rules taught in the National Curriculum.

1

Which sentence must end with a **question mark**?

Tick **one**.

Do you know how long it took for the trees to grow

☐

We have planted rose bushes around the trees

☐

How beautiful the flowers will be

☐

I will ask my teacher if I can show you

☐

1 mark

47

Rewrite the sentence below in the **passive**.
Remember to punctuate your answer correctly.

The noise of the traffic disturbed us.

1 mark

Spelling

1. Our dogs are _____ and full of energy.
2. The swans nested on an _____ in the lake.
3. We met a _____ writer.

2024 Spelling script

Spelling 1: The word is **young**.

Our dogs are **young** and full of energy.

The word is **young**.

Spelling 2: The word is **island**.

The swans nested on an **island** in the lake.

The word is **island**.

Spelling 3: The word is **famous**.

We met a **famous** writer.

The word is **famous**.

Reading Test

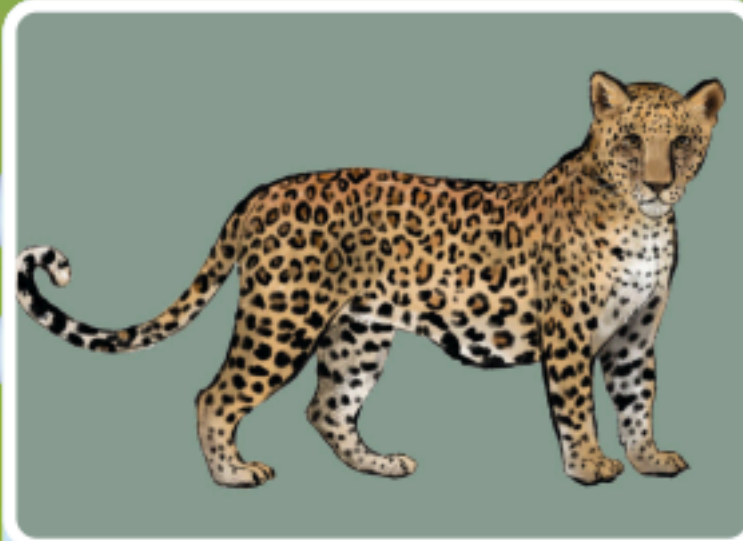
- For this test there will be one reading book and one answer booklet.
- The test will last for one hour (including reading time).
- There will be a total of 50 marks available.
- There will be three texts - easier, middle, hardest.
- There will be a range of texts including fiction, non fiction and poetry.



Streaky and Squeaky



**The Girl who
Walked on Air**



The Leopard

Madagascar is an island country in the Indian Ocean, off the coast of East Africa. It is well known for its range of weird and wonderful wildlife.

Imagine treading through the rainforest in Madagascar and noticing hurried movements in the plants below you. You creep forward to investigate. Suddenly, you see a group of animals unlike anything that you have seen before. Ten of them are sniffing along the ground with long, pointy snouts that look almost like bird beaks. The creatures are quite small – maybe the size of a pet hamster. Their bodies are round and covered with spines like a hedgehog. They are brightly coloured like a bumblebee with yellow streaks running down their backs and legs. On their heads, each of the animals has a crown of bright yellow spikes.

1

According to the text, *Madagascar is well known for its range of weird and wonderful wildlife.*

This suggests...

Tick **one**.

it is very difficult to find your way around the island.

☐

tenrecs are the most famous animals on the island.

☐

there are lots of unusual animals on the island.

☐

streaked tenrecs live all over the world.

☐

1 mark

The hunters had seen the carcass of the deer, and they had seen the leopard paw prints, and so they kept coming to the forest. Almost every evening I heard their guns banging away, for they were ready to fire at almost anything.

"There's a leopard about," they always told me.
"You should carry a gun."

"I don't have one," I said, and they went away.

After that, there were fewer birds to be seen, and even the monkeys had moved on. The pine martens, who had previously become bold, now dashed into hiding at my approach. The smell of one human is like the smell of any other.

One day, I was out walking and came across the entrance to a cave. The silence was so absolute that it seemed to be ringing in my ears. But there was something else of which I was becoming increasingly aware: the strong feline odour of one of the cat family.



35

Read the paragraph beginning: *One day...*

What made Ruskin suspect that the leopard was inside the cave?

1 mark

Maths Tests

- There are three maths tests
- Wednesday - Arithmetic and Reasoning Paper 1
- Thursday - Reasoning Paper 2
- Arithmetic - 36 questions in the arithmetic test worth a total of 40 marks. The test will last 30 minutes.
- Reasoning Papers - Each paper will be of 40 minutes duration with a total of 35 marks per paper available.

1

$$707 - 10 =$$

18

$$\frac{1}{3} + \frac{2}{6} + \frac{5}{18} =$$

20

x

5 0 8
7 4

2

Write these temperatures in order, starting with the **lowest**.

6°C

−4°C

1°C

−10°C

3°C

°C

°C

°C

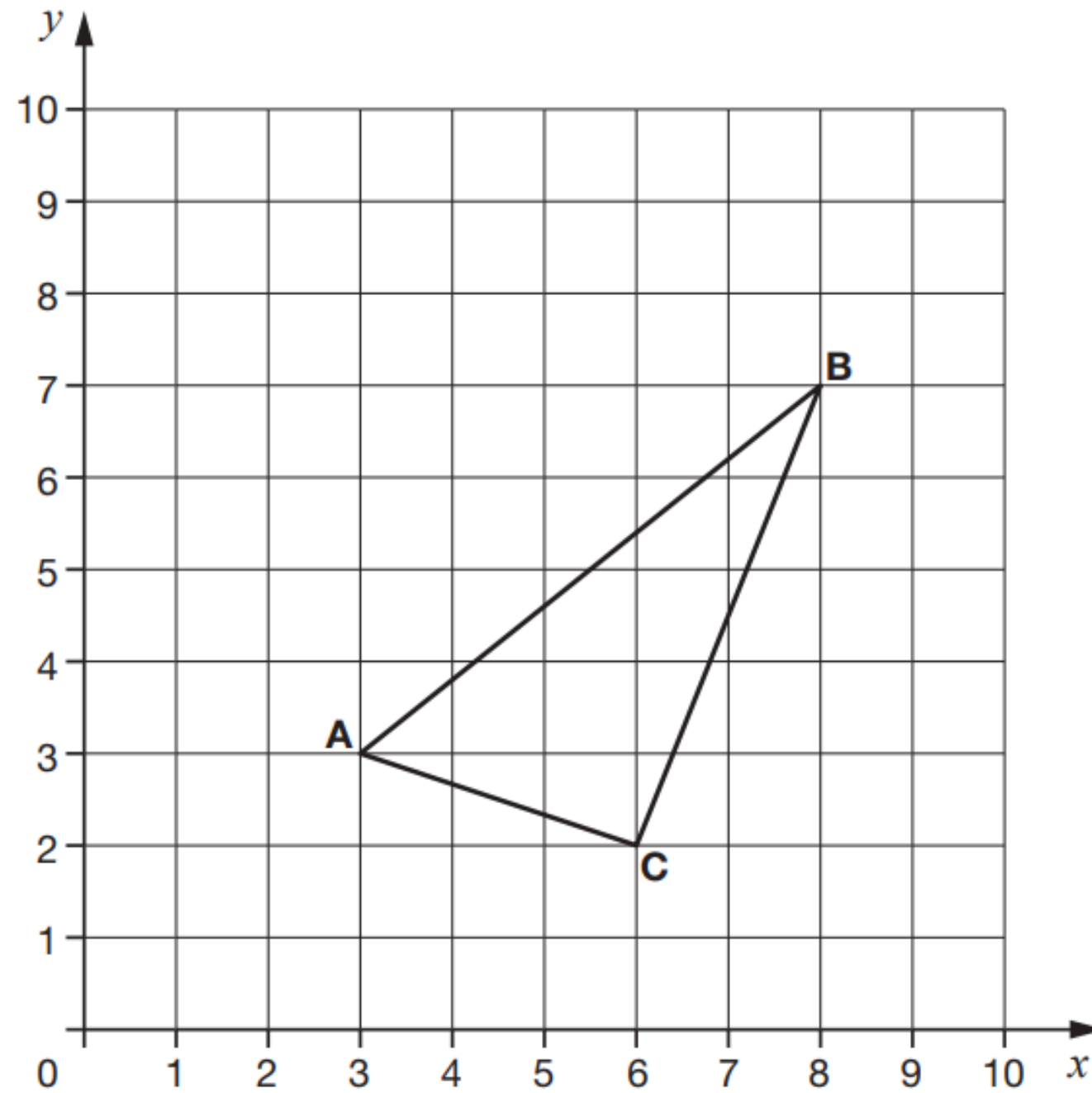
°C

°C

lowest

1 mark

3



ABC is a triangle.

What are the coordinates of point **C**?

(,)

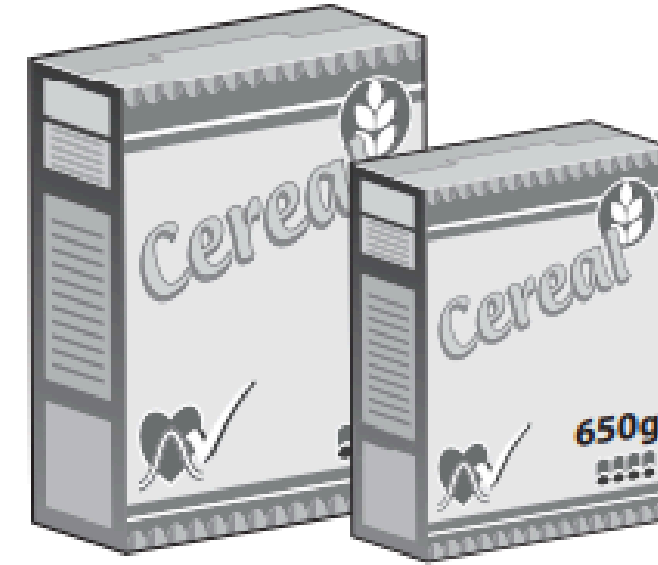
1 mark

23

A small box contains **650** grams of cereal.

A large box contains **20% more** cereal.

One portion of cereal is **40** grams.



How many **full** portions are in a **large** box?

Show your method

portions

2 marks

When are SATs?

For the academic year 2024 to 2025, the KS2 tests are scheduled to take place from Monday 12 May to Thursday 15 May 2025:

Date	Subject	Test papers
Monday 12 May	English grammar, punctuation and spelling	Paper 1: questions Paper 1: spelling
Tuesday 13 May	English reading	English reading
Wednesday 14 May	Mathematics	Paper 1: arithmetic Paper 2: reasoning
Thursday 15 May	Mathematics	Paper 3: reasoning

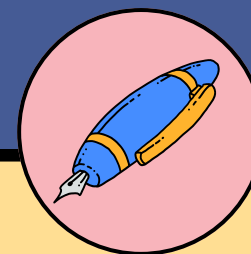
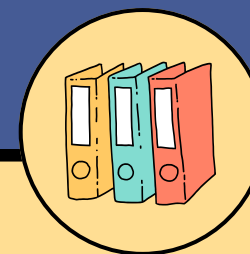
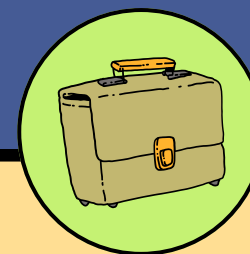
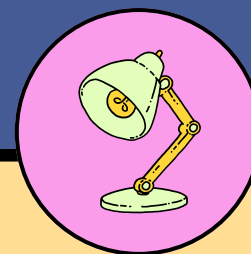
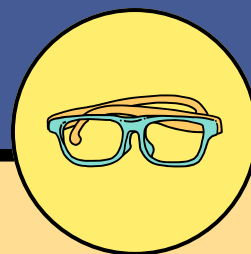
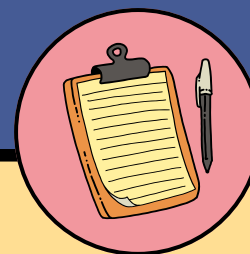
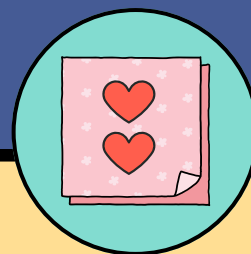
Your child will sit the KS2 tests on scheduled dates set by the Standards and Testing Agency (STA). If your child is absent on a scheduled test day, they may be able to take any missed test up to 5 school days afterwards. Your child's school must apply for a timetable variation and receive approval from STA to allow for this.

Please note: MAY be able to. We have to seek permission for this and it is not guaranteed.

Please do not book holidays, appointments or trips for this week.

How can we prepare?

- Ensure pupils are completing their homework and reading daily
- If you want ideas on work, please check the latest curriculum map - this is available via the school website and has links in it
- Sleeping and eating properly is vital
- Attendance



HELPING AT HOME

- Remember your child's education is a partnership. Meet with teachers at parents' evenings and see how they believe you can help.
- Support your child with their homework.
- Read regularly and discuss a variety of texts - don't just listen to your child read.
- Try short bursts of arithmetic practice and recalling times tables facts.
- Practise telling the time and problem solving etc.
- Regularly practise the year 5/6 key words/spellings.
- Use websites and online activities to practise skills.
- Encourage your child to believe in themselves, "You can do it!"
- **Do not** put your child under too much pressure. Have fun, they will find things easier to remember if they remember the good times they had learning.
- Help children to relax and do things that are not related to school.

Access Arrangements

Access arrangements might be used to support pupils:

- who have difficulty reading
- who have difficulty writing
- with a hearing impairment
- with a visual impairment
- who use sign language
- who have difficulty concentrating
- who have processing difficulties

These children may benefit from:

- additional time
- scribes
- a reader
- test modifications

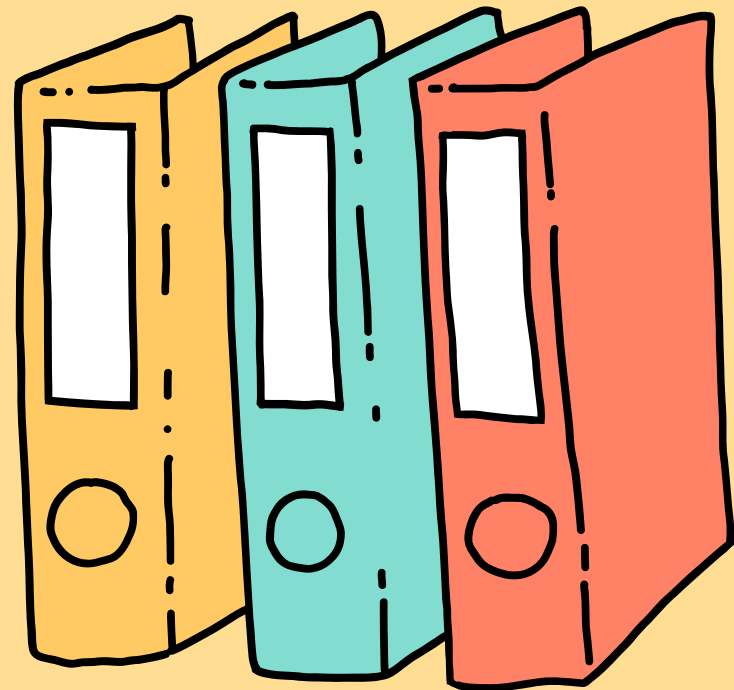
Results and Grading

Schools can view KS2 test results online from Tuesday 8 July 2025.

- We try to get the results home on the same day
- Sometimes results are delayed e.g. website crashes, we are querying a result
- Pupils will be told by their teacher 1:1 and can choose to share or not with their peers
- Results will be sent home on paper on that day and a formal copy will come home with her summer report



Results: Standardised Scores



<100

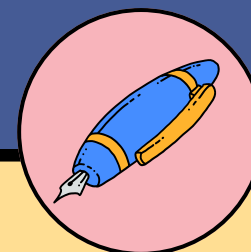
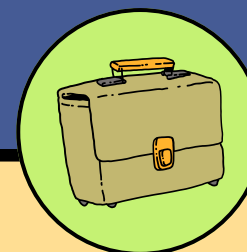
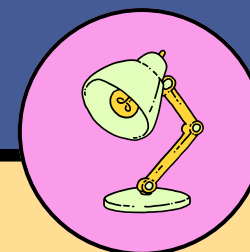
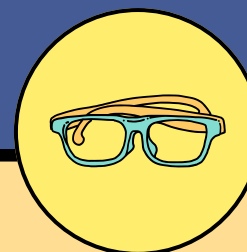
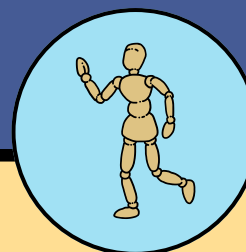
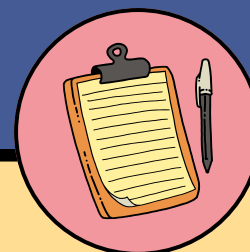
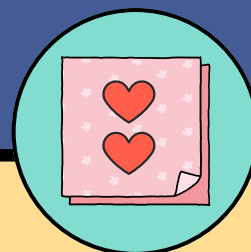
100

>110

Working towards
the expected
standard

Average

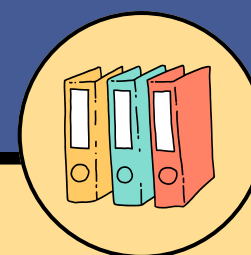
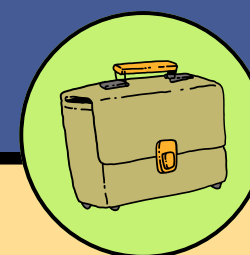
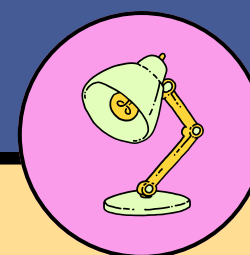
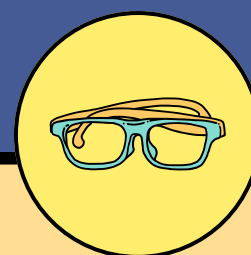
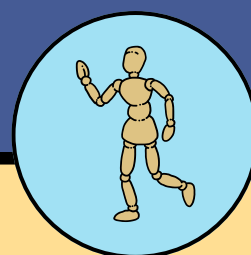
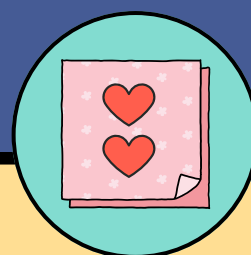
Working at
greater depth



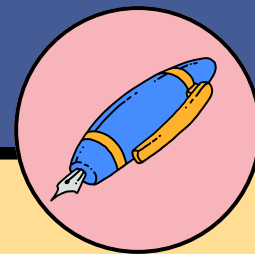
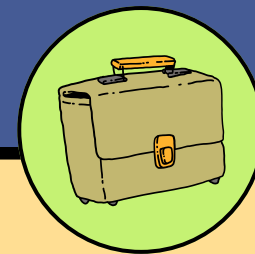
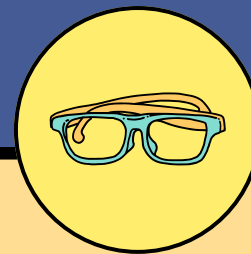
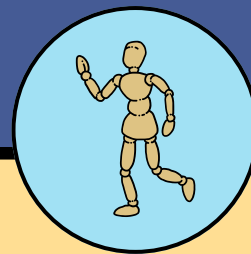
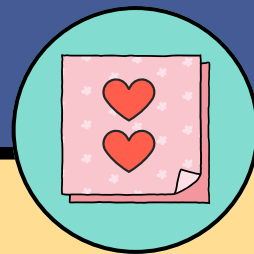
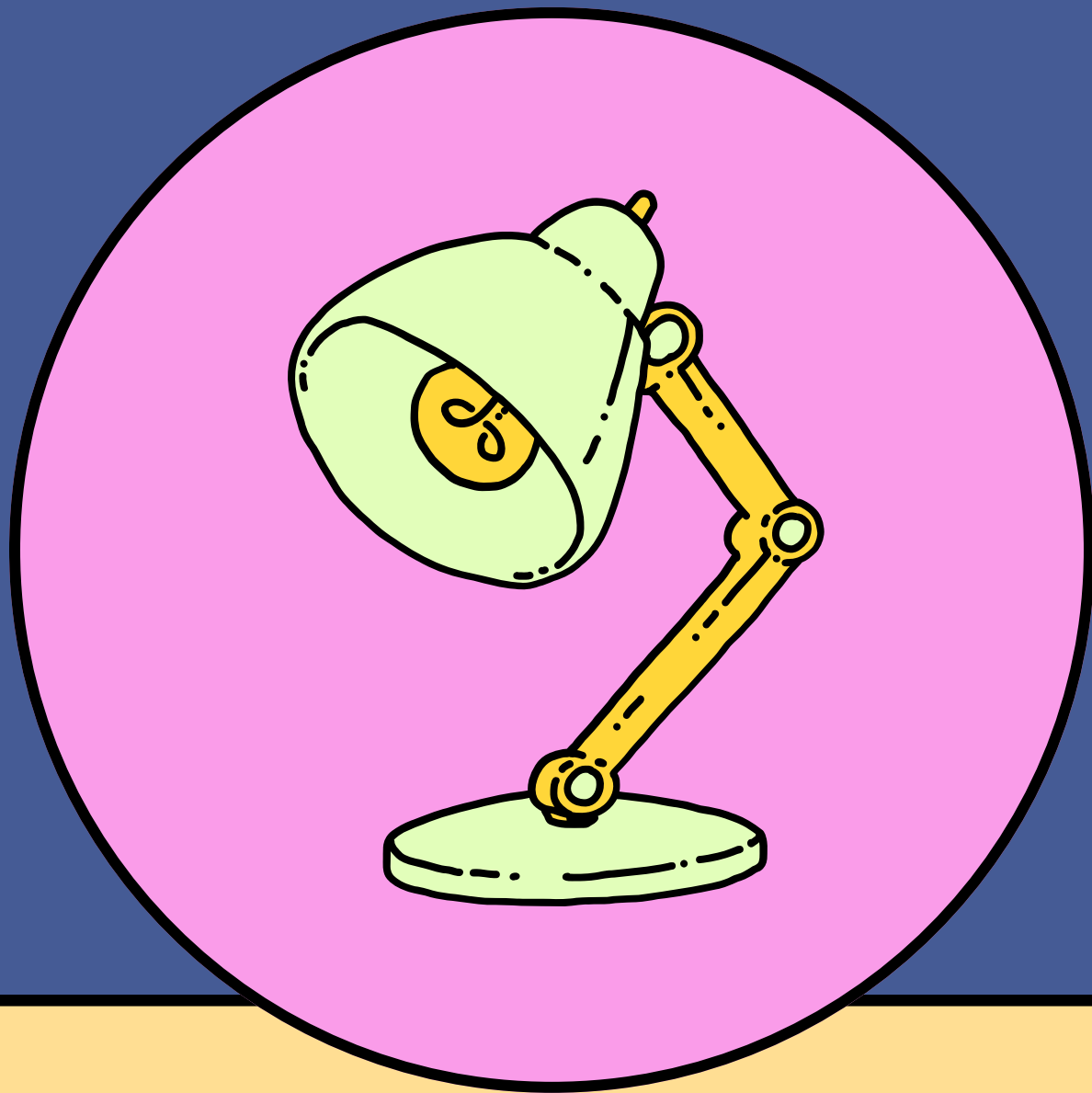
Writing in Year 6



- Writing is assessed internally in Year 6
- Pre Key Stage - anybody working below Y2
- Working Towards the Expected Standard
- Working at the Expected Standard
- Working at Greater Depth
- Possible moderation visits from Luton



Any Questions?



Thank You for Attending

